



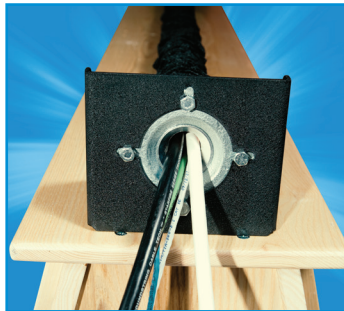
Speed Sleeve™- Sleevng Installation Tool

Applying Flexo® braided sleeving by hand to wires and cables can be a time-consuming process, especially in your production environment. The Techflex® Speed Sleeve™ can improve the process for repetitive jobs and long runs. The easy-to-use tool is designed to accelerate the process. The practical Speed Sleeve™ base unit can accommodate any tube length and mount to a workbench, miter stand, or similar surface. Speed Sleeve™ fits sleeving directly to harnesses for a neat, snug, and efficient application. You can customize the tubes and layout to best suit your job. Your production team will save precious time and your wiring will be protected for a lifetime.

1. Gather Sleeving on Fixture



2. Feed Wires



3. Set-Up Pulleys



4. Pull Wires & Sleeving



Base Unit **IN-EXP**

Complete Kit, Small, 3 ft. - **IN-EXPCS**

Complete Kit, Large, 6 ft. - **IN-EXPL**

3 ft. 1/2" Tube Assembly - **IN-EXPT063**

6 ft. 1/2" Tube Assembly - **IN-EXPT066**

3 ft 1" Tube Assembly - **IN-EXPT123**

6 ft 1" Tube Assembly - **IN-EXPT126**

3 ft 1 1/2" Tube Assembly - **IN-EXPT183**

6 ft 1 1/2" Tube Assembly - **IN-EXPT186**

ClampTite Tool

ClampTite tool is designed to tighten safety wire - any size, any shape, anywhere, thus utilizing its strength and versatility. The tool provides a way of tightening wires wrapped around an object and then locking it in place. It can be used with various sizes of wires.

ClampTite - 5/4" Stainless Steel Tool with Aluminum Bronze T-Bar Nut & Lanyard Extension - **CLT01L**

Safety Wire Light, 304 Stainless Steel (.025); 1 lb. Can (600') - **SFW.025SV**

Safety Wire Standard, 304 Stainless Steel (.032); 1 lb. Can (360') - **SFW.032SV**

Safety Wire Heavy, 304 Stainless Steel (.041); 1 lb. Can (220') - **SFW.041SV**



F6® Installation Tool

This simple tool makes installing long lengths of F6® sleeving a breeze. Just insert your bundle of wires into the shank of the tool and slide it along the split in the sleeving. As the tool travels along the sleeving, it deposits the wires and allows the split to close correctly.

For Installing 1/4" F6 Sleeving - **INN0.25OR**

For Installing 1/2" F6 Sleeving - **INN0.50OR**

For Installing 3/4" F6 Sleeving - **INN0.75OR**

For Installing 1" F6 Sleeving - **INN1.00OR**

For Installing 1 1/2" F6 Sleeving - **INN1.50OR**



Flexo® Flange

Techflex's® Flexo® Flange is a quick and effective way of creating permanent wiring installations attractively and affordably. Flexo® Flange is used in a variety of applications where a secure, finished end is desirable. The processed ends add hundreds of pounds of strain relief. This innovation opens a whole new world of management possibilities that are production ready.

Patent # US 8,002,781 B1

FEN1.75BK3

FEN1.75BK5

FEN1.75BK7

FEN1.75BK10

FEN1.75BK12

FEN1.75BK15

FEN1.75BK20

FEN1.75BK25

FEN1.75BK30

FEN1.75BK40

FEN1.75BK50

FEN1.75BK75

FEN1.75BK100

