

O2O

Introducing the new O2O (Optical to Optical) convertor from Global Invacom. Fully compatible with all the current FibreIRS headend equipment and designed for future compatibility. Replaces the functionality of the O2E and ODU32 in one compact unit.

Specifications:

- FibreIRS FC/PC optical input
- Fully compatible with GI optical LNB, ODU32 & ODU32 (1550) and the new wideband LNB and OTX
- 2 x FC/PC optical outputs
- Space saving design
- Small form factor

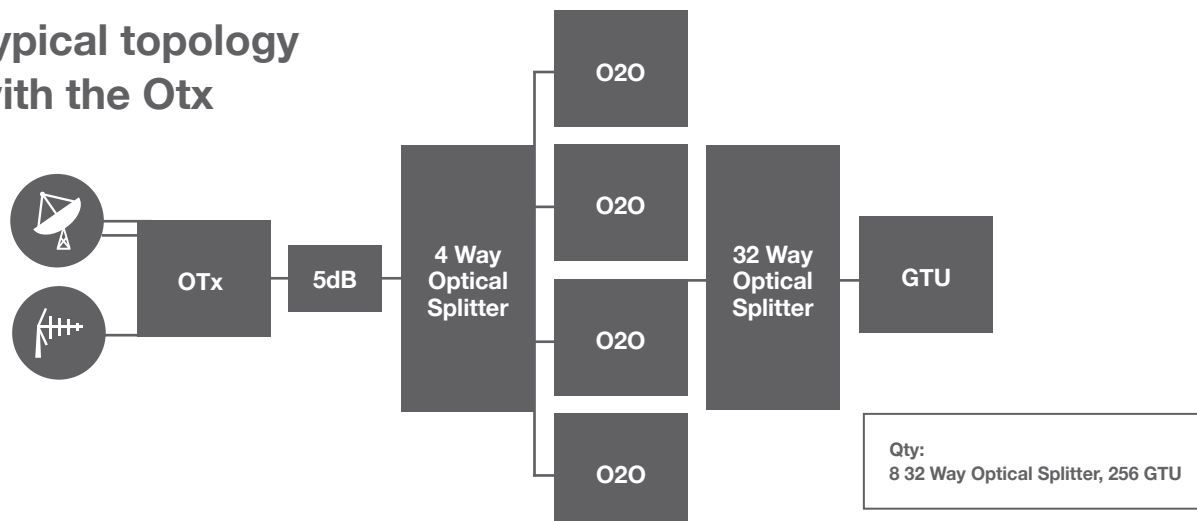


O2O

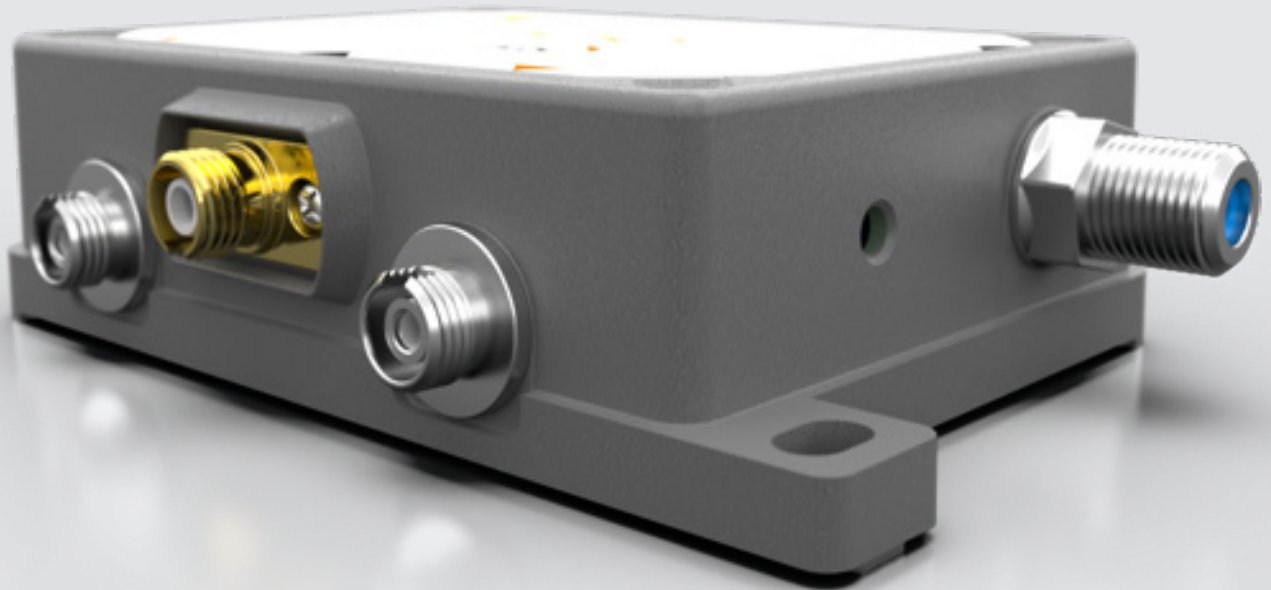
Technical Specifications:

Product Part number		
O2O	D000411	
FM,DAB,DTT & Satellite (Optical)		
Optical wavelength (Input)	1100nm to 1650nm	
Optical wavelength (Output)	1310nm	
Optical input power	-12dBm	-3dBm
Optical output power	+7dBm	
Return Loss	20dB	
DC specification		
Input voltage	20V	
Current consumption	150mA Max	
Connectors		
Input	FC/PC	
Output	2 x FC/PC	
Power supply	F connector	
Environmental Specification		
Operating temperature	-10 C to +50 C	
Storage temperature	-40 C to +70 C	

Typical topology with the Otx



Global Invacom will only support systems that are installed using FibreIRS™ approved fibre cabling & system components.



Waste Electrical and Electronic Equipment (WEEE)

Global Invacom Ltd recognises its responsibilities and obligations under all current National and European legislation and regulations and is totally committed to and in support of compliance with the European Union Directives on Waste, Electrical and Electronic Equipment (WEEE). We are also committed to meeting our importer responsibilities and obligations, as defined in the scope of the Directives, for those products that we import into the U.K. market place.

All of our suppliers are required to ensure that all products, (that fall within the scope of the Directives), are marked with the "Do Not Dispose of in Household Waste" symbol as prescribed in the WEEE Directive.

Global Invacom Ltd has an obligation to ensure the appropriate steps are taken for the recovery and recycling of WEEE from its customers. To meet this obligation we ask customers to contact the Customer service Department (+44 (0)1438 310510) sales@globalinvacom.com once the product has reached the end of its life. Alternatively the product can be disposed of at a designated collection point for the recycling of waste electrical and electronic equipment.



www.globalinvacom.com Email: sales@globalinvacom.com

Global Invacom cannot be held responsible for damage caused to equipment during, or following the Installation of the product. For best results always have satellite accessories installed by a professional Installer. Global Invacom reserve the right to change or amend products without prior notice.

Copyright Global Invacom Ltd 2022 PRN: WEE/KF0056TR PCS: B2B Compliance Ltd

Global Invacom Ltd. Freeman House, John Roberts Business Park, Pean Hill, Canterbury, Kent CT5 3BJ