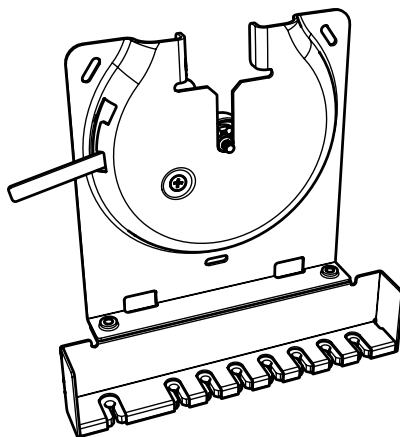


SANUS

Slim Wall Mount WSSCAM1-B2 INSTRUCTION MANUAL



WE'RE HERE TO HELP

If you have any questions along the way, our install experts are standing by to help.



Call us at: **+31 (0) 495 580 852**

US: **1-800-359-5520**

UK: **(0) 800 056 2853**

AUS: **+61 (0) 7 3299 7000**



Or, email at: **info@sanus.com / sanus.europe@milestone.com (EU)**

IMPORTANT SAFETY INSTRUCTIONS. READ ENTIRE MANUAL PRIOR TO USE. SAVE THESE INSTRUCTIONS

This mount is designed to
support Sonos® Amp™.

**Amp Weight Limit
DO NOT EXCEED**

**6 lbs.
(2.72 kg)**

Before getting started, let's make sure this product is perfect for you!

CAUTION: To avoid potential personal injuries and property damage:

- Check your Sonos® Amp™ owner's manual to see if there are any special requirements for mounting your Sonos® Amp™.
- Please read through these instructions completely to be sure you're comfortable with this easy install process.
- Do not use this product for any purpose not explicitly specified by manufacturer.
- Manufacturer is not responsible for damage or injury caused by incorrect assembly or use.
- The wall must be capable of supporting five times the weight of the Sonos® Amp™ and mount combined.
- If you do not understand these instructions or have doubts about the safety of the installation, assembly or use of this product, contact Customer Service.

Tools Needed



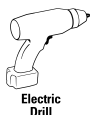
Pencil



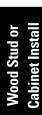
Level



Screwdriver



Electric Drill



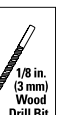
Wood Stud or Cabinet Install



Stud Finder



Awl



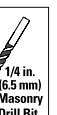
1/8 in.
(3 mm)
Wood
Drill Bit



Concrete Install



Hammer



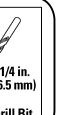
1/4 in.
(6.5 mm)
Masonry
Drill Bit



Drywall Install



Hammer



1/4 in.
(6.5 mm)
Drill Bit

PARTS AND HARDWARE

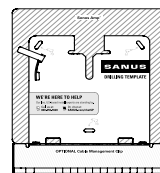
Before starting assembly, verify all parts are included and undamaged. If any parts are missing or damaged, DO NOT return the damaged item to your dealer; contact Sanus. Do not use damaged parts.

WARNING: CHOKING HAZARD — This product contains small items that could be a choking hazard if swallowed.

NOTE: Not all hardware included in this kit will be used.

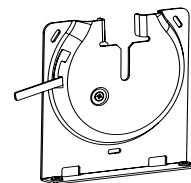
INCLUDED IN BOX

1



1 Wall Template

2



1 Wall Plate with Lock

3



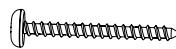
1 Knob Assembly

4



3 Anchors

5



3 Screws (#10 x 1-3/4")

6



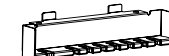
3 Cabinet Screws (#10 x 3/4")

7



2 Screws (1/4-20 x 3/8")

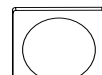
8



1 Cable Management Bracket

NOT INCLUDED

A



Sonos® Amp™

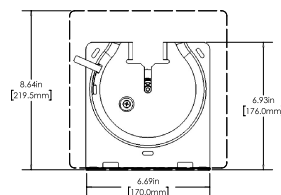
B



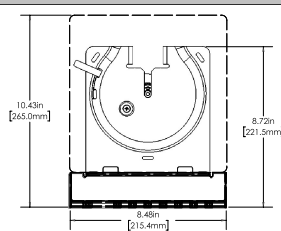
Cables

DIMENSIONS

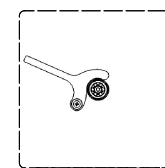
WALL PLATE



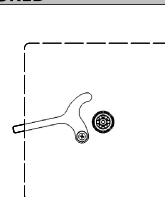
WALL PLATE + CABLE MANAGEMENT



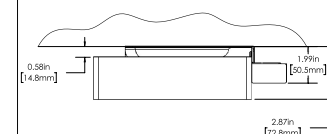
LOCKED



UNLOCKED

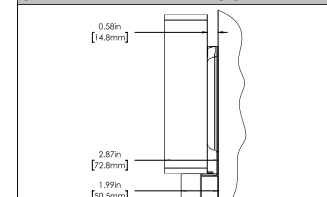


SIDE VIEW - UNDER CABINET



WOOD SURFACES ONLY!

SIDE VIEW - WALL MOUNT

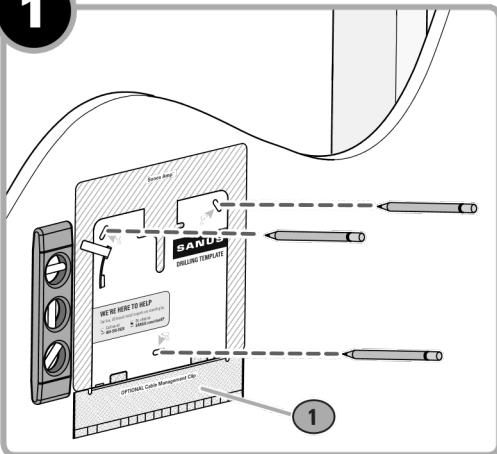


Milestone AV Technologies and its affiliated corporations and subsidiaries (collectively, "Milestone"), intend to make this manual accurate and complete. However, Milestone makes no claim that the information contained herein covers all details, conditions, or variations. Nor does it provide for every possible contingency in connection with the installation or use of this product. The information contained in this document is subject to change without notice or obligation of any kind. Milestone makes no representation of warranty, expressed or implied, regarding the information contained herein. Milestone assumes no responsibility for accuracy, completeness or sufficiency of the information contained in this document.

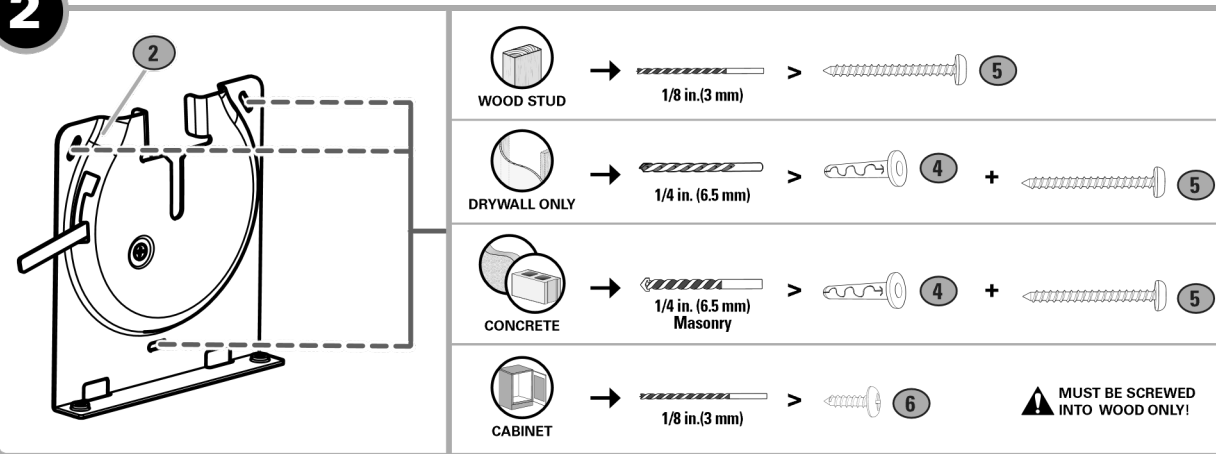
Milestone Global Headquarters - 6436 City West Parkway Eden Prairie, MN 55344 USA
©2018 Milestone AV Technologies. All rights reserved. ECHOGEAR is Milestone brand.
ECHOGEAR and the ECHOGEAR logo are trademarks of Milestone. Made in China.

ASSEMBLY AND INSTALLATION STEPS

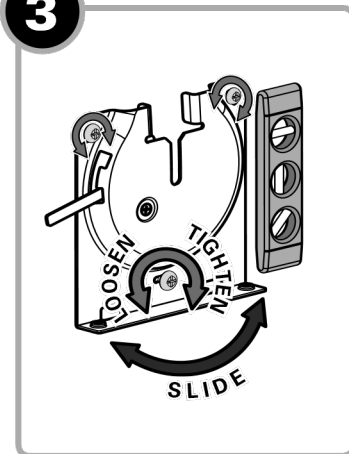
1 Use wall template to mark holes



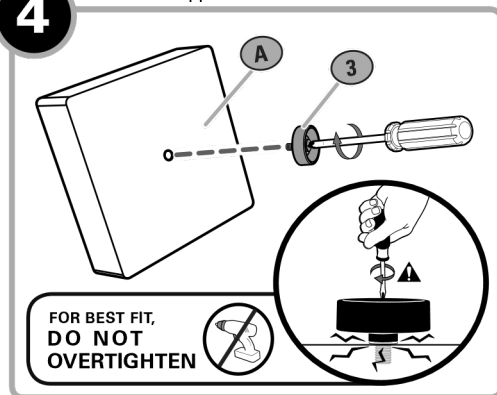
2 Mount plate to wall or cabinet by pre-drilling holes and inserting proper hardware.



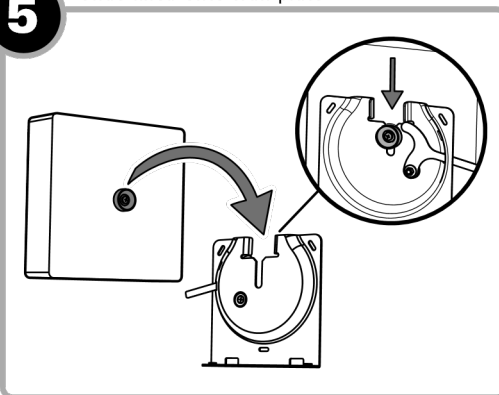
3 Adjust to assure mount is level



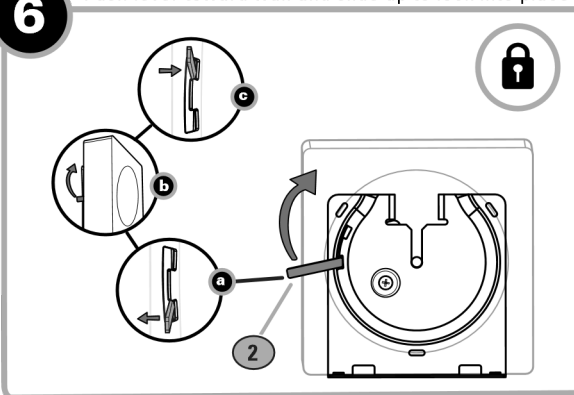
4 Screw in support knob



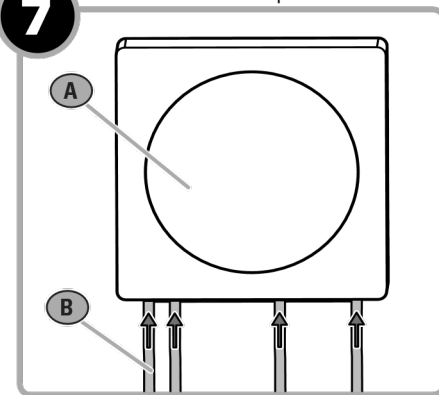
5 Slide knob onto wall plate



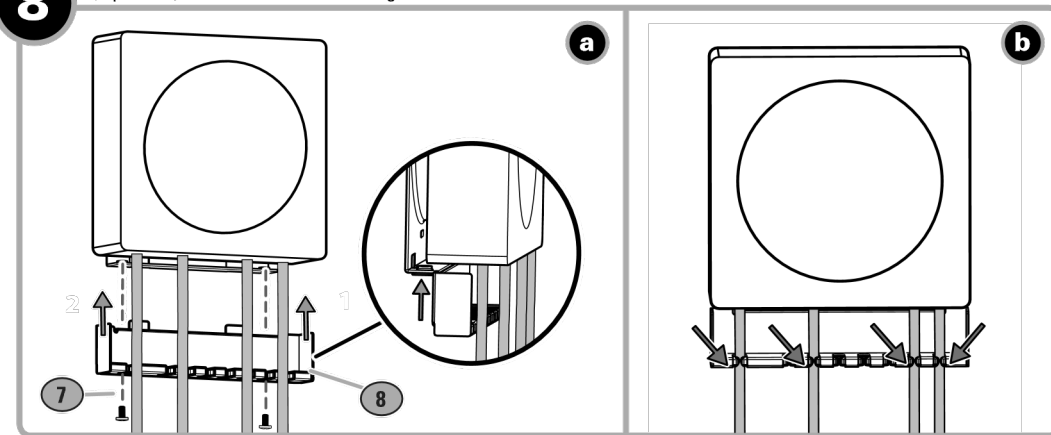
6 Push lever toward wall and slide up to lock into place



7 Attach cables to amp

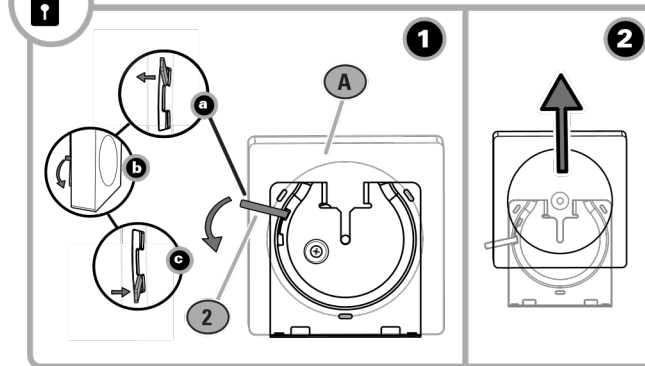


8 (Optional) Attach the cable management bracket and secure cables into slots



REMOVING AND ADJUSTMENTS

Unlock and slide amp up



Loosen screws, level and tighten

